



Installation and playing instructions



SEMPRA

www.boehm-organs.com

Style Box 2 for SEMPRA - Installation and playing Instructions

Version 1.00

Art no. 59162

Last update: 04.05.2019

The information contained in this documentation may be changed without notice. announcement and are subject to change without notice by Keyswerk. Musikelektronik GmbH does not represent an obligation.

Changes of technical details compared to the descriptions.

The information and illustrations in this manual are subject to change without notice. The Keyswerk Musikelektronik GmbH cannot be held liable for program errors and for incorrect information in the documentation and its consequences assume no liability.

© Keyswerk Musikeletronik GmbH 2019

All rights reserved

Responsible for the content:

KEYSWERK Musikelektronik GmbH

Warbersche Str. 32

31675 Bückeberg

Phone: 05722 - 905088

Fax: 05722 - 287555

Internet www.boehm-orgeln.de

E-mail info@boehm-orgeln.de

content

General information	4
prerequisites.....	4
installation.....	5
Where can I find the Style Box data?	6
Overview STYLE BOX 2.....	7
STYLES.....	7
SONGS	8

General information

STYLE BOX is a new style series for all Böhm-SEMPRA organs and keyboards.

Each pack in this series contains 16 styles, each with a specially arranged SONG, containing four one-touch presets adapted to each of the four style variations. All styles and SONG presets were professionally arranged by BÖHM specialist Claus Riepe.

Whether traditional swing and fox rhythms, country and Latin styles, soulful ballads or groovy dancefloor beats - the AMADEUS STYLE BOX contains everything.

All rhythms are well balanced, instrumented, sounding round and powerful and are arranged in a musically meaningful and flexible way. It's fun to play straight away!

This package contains the second STYLE BOX pack. A detailed list of the included styles, presets and sounds can be found in the appendix to these installation and play instructions.

prerequisites

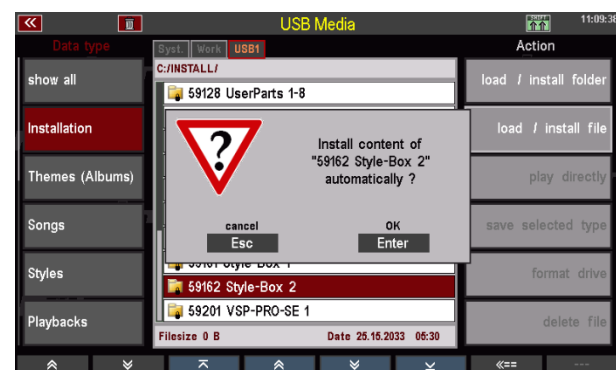
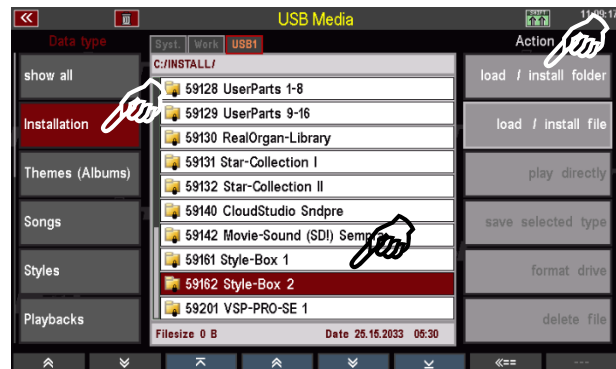
To ensure that the presets sound exactly as they were programmed, your SEMPRA should be equipped with the drawbar sound module RealOrgan 2.0 and the DSP extension for Amadeus2 (Art. No. 41115).

If these extensions are not available, there may be slight deviations in some presets if drawbar sounds or Amadeus effect sounds (FX sounds) have been used.

Installation

The Style Box 2 data is supplied on the USB stick belonging to your SEMBRA and has to be installed into the instrument from there:

- Insert the USB stick into one of the USB sockets on your SEMBRA.
- Press the **[USB]** button to open the USB menu in the display.
- Tap on the **Installation** data type on the left (the field is displayed in red).
- Move the cursor with the **data wheel** or the **up/down cursor keys** to the "59162 Style Box 2" folder (do not open the folder!).
- Tap on the "**Load/install folder**" field on the right.
- The display asks if you really want to install the data. Confirm with **[Enter]**.
- The data will now be loaded. You can then exit the USB menu again (press **[ESC]** or **[USB]**).



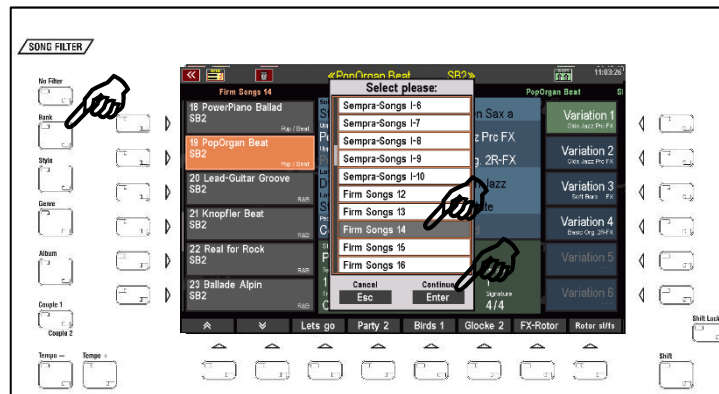
The data of the STYLE BOX 2 are now loaded and can be used.

Attention: Please note that factory data, including the Style Box, are always installed account specific. If you use additional user accounts on your SEMBRA and the style box data is to be used in these accounts as well, you may have to perform the installation again for these additional accounts!

Where can I find the Style Box data?

The **Style Box SONGS** with the presets can be found in the **Firm SONG bank 14**. Call up this bank e.g. via the **SONG filter** button [Bank] (press twice if not already selected) and then scroll to the corresponding bank position.

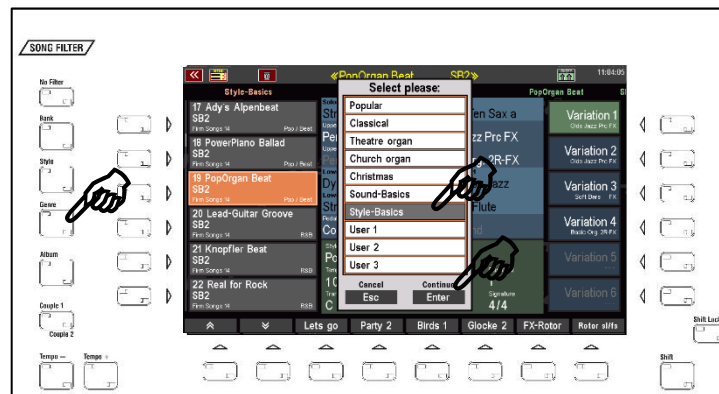
Confirm with [Enter]. The SONG list on the left side of the display now shows the SONGS of Firm bank 14 (Style Box).



Alternatively, you can call the **STYLE BASICS** genre for the SONG list. All Style Box SONGS are assigned to this genre.

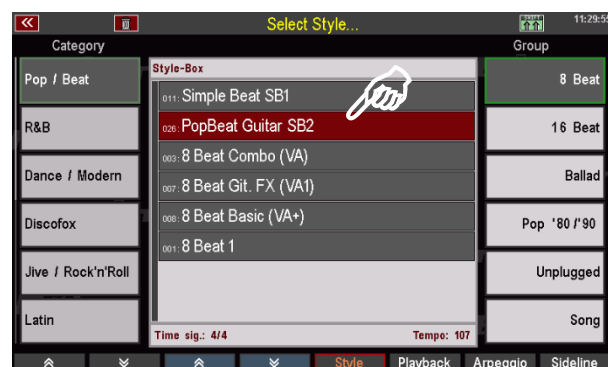
Press the SONG Filter button [Genre] (press twice if necessary, if not already selected) and select the genre "Style Basics" from the list.

Confirm with [Enter]. The SONG list on the left now shows the SONGS of the genre "Style Basics", here among others the Style Box SONGS.



SONGS of the Style Box packages can be recognized by the abbreviation **SB1, SB2...** in the SONG name.

The **Style Box STYLES** occupy the Firm style Bank 12. They are assigned to the corresponding categories and sub-groups in the style selection. Style Box Styles can be recognized in the style selection by the abbreviations **SB1, SB2...** in the style name.



Overview STYLE BOX 2

Styles

Bank	Nummer	Name
112	017	Adys Alpenbeat SB2
112	018	Alpen Power-Ballade SB2
112	019	Baker Hitpolka SB2
112	020	Chillin Groove SB2
112	021	Disco Schlager SB2
112	022	Easy Guitar Jam SB2
112	023	HardRock Shuffle SB2
112	024	Lite Guitar Rock SB2
112	025	Organ Blues SB2
112	026	PopBeat Guitar SB2
112	027	PowerPiano Ballad SB2
112	028	RockBallad lite SB2
112	029	Romantic Ballad SB2
112	030	Scandi-Shuffle SB2
112	031	Schlager Beat SB2
112	032	Schlager fix SB2

SONGS

Bank	Num	Name	
114	017	Ady`s Alpenbeat	SB2
114	018	PowerPiano Ballad	SB2
114	019	PopOrgan Beat	SB2
114	020	Lead-Guitar Groove	SB2
114	021	Knopfler Beat	SB2
114	022	Real for Rock	SB2
114	023	Ballade Alpin	SB2
114	024	Rock Ballad	SB2
114	025	Schlager D-Fox	SB2
114	026	Tromb. Romance	SB2
114	027	Schlager Beat	SB2
114	028	Disco Schlager	SB2
114	029	REAL Jimmy Blues	SB2
114	030	Nordic Accordion	SB2
114	031	Chillin` Nights	SB2
114	032	Baker Organ	SB2



BÖHM Organs

KEYSWERK Musikelektronik GmbH

Warbersche Str. 32

31675 Bückeburg

Phone: 05722 905088

Internet www.boehm-orgeln.de

E-mail info@boehm-orgeln.de