

Böhm

ORGELN | KEYBOARDS

Installation and Playing instructions



SEMPRA

SONG List II

Claus Riepe / Bernd Wurzenrainer

SEMPRA SONG List II - Claus Riepe, Bernd Wurzenrainer
Installation and playing instructions

Version 1.0
Item no. 41162E

Last update: 01.12.2019

The information contained in this documentation is subject to change without notice and does not constitute a commitment on the part of **Keyswerk Musikelektronik GmbH**.

The description is based on the information available at the time of printing.

The display images shown in this manual are examples only and may differ from the actual displays on your instrument.

We reserve the right to make changes to technical details in relation to the descriptions, specifications and illustrations in this manual.

Keyswerk Musikelektronik GmbH cannot accept any liability for program errors and for incorrect information in the documentation and their consequences.

© Keyswerk 2019

All rights reserved

Responsible for the content:

BÖHM Orgeln
KEYSWERK Musikelektronik GmbH & Co. KG
Warbersche Str. 32
31675 Bückeburg
Tel.: 05722 905088
Internet <http://www.keyswerk.de>
E-Mail info@keyswerk.de

content

General information	4
Requirements	4
Installation	5
How to find the SONG List II SONGs	6
Overview SEMPRA SONG List II	
Bank 112 - Sempra songs II CR:	8
Bank 113 - Sempra-Songs II BW:	13

General information

With the SEMPRA SONG List II (called "Sempra Songs II" in the organ) you get 128 fantastic additional SONGs with corresponding Global Presets for your SEMPRA, to play the titles marked in the SONG names as well as many other pieces of music full of sound. Our top musicians Bernd Wurzenrainer and Claus Riepe each created 64 SONGS for you and worked out several global presets for each SONG.

The first 64 SONGS on the list were created by Claus Riepe and are named by title, i.e. they were specially optimized for certain pieces of music (which doesn't mean that you can't use these presets for many other titles or easily change them and save them as a new preset). Bernd Wurzenrainer has created his second group of 64 SONGS in such a way that they partly also have certain songs, but often also "only" certain artists or styles as a model. So these presets can be used even more generally, but with titles like "Miller Moonlight" or "Mr.WunderbarFox" you have a typical sound immediately, or immediately an artist or even a title in your head!

The presets of the SONG List II are worked out in great detail in order to achieve musically meaningful sound enhancement when playing. In the appendix to these operating instructions you will find an overview of all 128 SONGS included. By the way, all SONG names in SONG List II are marked with the abbreviation "SL2" (Song List II). This principle has already proven itself with other software packages. So you always keep track of which data you are currently playing with.

Requirements

In order for the SONG presets to sound exactly as programmed, your SEMPRA should be equipped with the Drawbar sound module RealOrgan, the Drawbar packages Böhm Vintage (Art.-No. 41921) and American (Art.-No. 41923) as well as the Amadeus DSP-Extension (Art.-No. 41115).

If these extensions are not available, there may be slight deviations in some presets if drawbar sounds or Amadeus effect sounds (FX sounds) have been used.

Installation

You will receive the data of the SONG List II directly as an installation file on the factory data stick belonging to your SEMPRA, or, in case of subsequent purchase of the software, as an *archive file* via email. In this case, save the archive file transmitted to you on your PC on the factory data stick as described in the main manual for SEMPRA or the additional instructions for SEMPRA Version 1.3.

- Then insert the stick into the SEMPRA. The display indicates that the archive file has been found and asks if it should be unpacked. Confirm with **[Enter]**.

The installation data is now available on the stick and can be installed as described below.



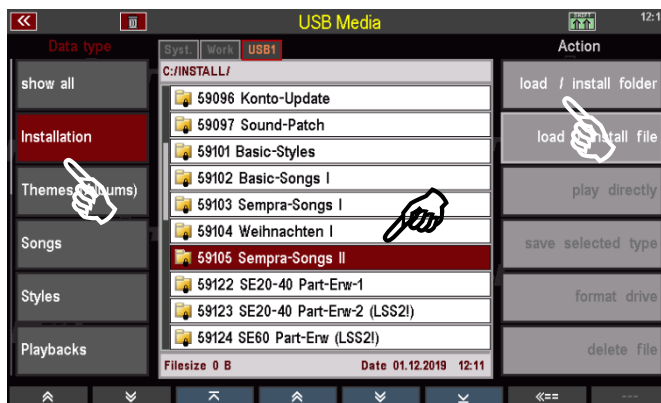
But first a tip: Delete the archive file from your factory data stick after installing the data. Otherwise, the display will always ask if the file should be unpacked when you insert the stick into the organ, as archive files are automatically detected. Unpacking has already been done and the archive file can be deleted from the stick, it is no longer needed.

But now to the actual installation:

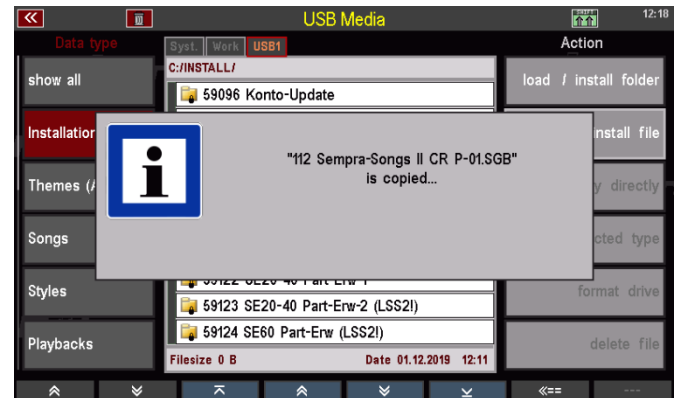
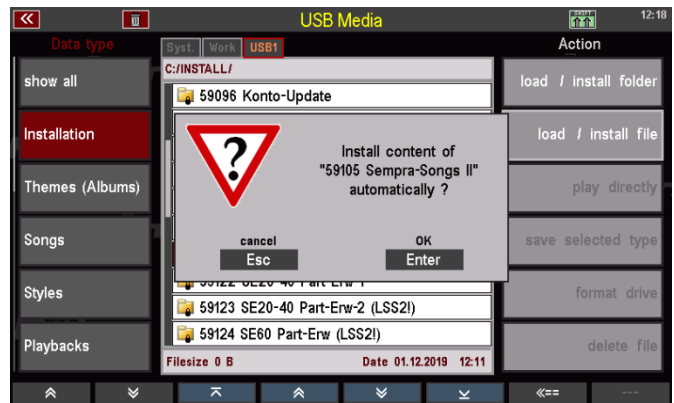
Attention: Like all factory data and other additional software packages, SONG List II is installed **specific for each user account**. If you want to use the SONG List II in multiple user accounts, you must perform the installation separately for each of these accounts.

We assume that the installation data is now on your factory data stick and the stick is plugged into the SEMPRA:

- Call up the USB menu and tap the **Installation** field on the left. The list of installation files is displayed.
- Place the cursor on the **59105 Sempra-Songs II** folder and tap **Load/install folder** on the right.



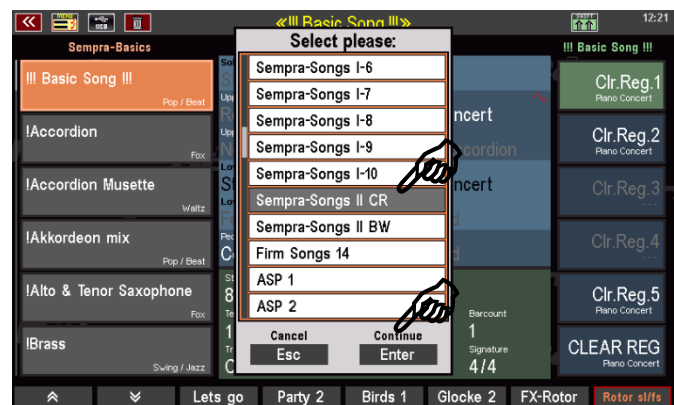
- The display asks if the data should really be installed. Confirm with **[Enter]**.
- The SONG List II will now be installed. You can then remove the stick again.



This completes the installation of SONG List II 2. The new data can now be used for gaming.

How to find the SONG List II SONGs

The SONG List II occupies the Firm SONG Banks 12 and 13. You can access and select these SONG Banks by pressing the SONG Filter button **[Bank]** left to the display and (by tapping the button again) selecting one of the two banks with the data wheel and pressing **[Enter]** to activate it for play:



- Bank Sempra songs II CR: 64 SONGS by Claus Riepe
 Bank Sempra Songs II BW: 64 SONGS by Bernd Wurzenrainer

After selecting the desired bank, you can select the corresponding SONGS in the display:



And now we wish you much pleasure with the excellent presets of the SONG List II and while making music with them on your SEMPRA!

Overview SEMPRA SONG List II

Bank 112 - Sempra songs II CR:

- | | | |
|----|--------------------------|--|
| 01 | Tut`en vas SL2 | 70's hit by Adam & Eve |
| 02 | Old Surehand SL2 | Perhaps the best of all the Karl May film tunes of the Martin Böttcher Orchestra. Guitar in lower manual left switched to MEMORY, for longer release. The melodic passages are alternated with strings and horns. |
| 03 | The Breeze and I SL2 | The Rhumba title is based on the Spanish folk song "Andalucia" and was made famous by orchestras and organists all over the world. |
| 04 | Forever Young SL2 | One of the greatest hits of the 1980s, by the Alphaville Group. The intro is in the upper manual on the left on a separate split area. Don't forget the velocity! |
| 05 | Secret Love SL2 | The song with Doris Day in the movie "Calamity Jane" became famous. Our SONG presents the song as a faster big band number in James Last style. |
| 06 | Orange Blossom SL2 | This speedy country folk song has been enhanced by the James Last Version. Famous and never missed a concert of the band. Play the B part with the typical trumpets on the lower manual right. |
| 07 | Amorada SL2 | One of the organ samba parade numbers, melody of course with a typical sinus drawbar sound. |
| 08 | Final Countdown SL2 | The theme from "Rocky" by the group "Europe". Play the fanfare intro on the Lower right! |
| 09 | Get Lucky SL2 | One of the big hits of the year 2014 |
| 10 | Vielen Dank Udo SL2 | To the memory of the German singer Udo Jürgens: The "Tom-&-Jerry" title song "Vielen Dank für die Blumen" in the line-up of a small jazz combo. |
| 11 | Smoke on Water SL2 | Deep Purple is greeting with Rock Guitar in INTRO Preset and distorted Hammond for the melody |
| 12 | Moment in Time SL2 | Whitney Houston's world hit in dreamy e-piano sound |
| 13 | Eleni SL2 | The song became a great success for the Dutch producer duo Tol & Tol and was covered by various organ artists (Claudia Hirschfeld, Franz Lambert...). The verse is to play on the lower manual on the right, the Corus melody on the upper manual. |
| 14 | Lullaby of Birdland SL2A | Jazz Standard in George Shearing Sound (Guitar, Piano, Vibraphone) |

- | | | |
|----|------------------------|---|
| 15 | Wind of Change SL2 | The anthem of German reunification, sung by the group "Scorpions". The whistle voice for the intro is on the Lower manual right. |
| 16 | Kung Fu Fighting SL2 | A disco hit from the 1970s. Attention: The right part of the Lower manual is splitted again: Choir-Voice and Piccolo for the Intro |
| 17 | Rock you Baby SL2 | Another disco classic that should not be missing at any 70s party |
| 18 | Fly Robin Fly SL2 | And all good things come in threes: another 70's classic, here you will find the typical disco strings on the Lower right, please use them with short pulls ofl the pitch wheel and phrase! |
| 19 | Sehnsucht SL2 | The great success of the unforgotten German singer Sandra. |
| 20 | Kalinka SL2 | The famous Russian folk tune, spread over three presets. We start with the preset VERS 1 (do not forget to increase the tempo in between: button TEMPO+). Then stop the rhythm at the transition to the intermediate part and recall the VERS 2 preset. The rhythm changes to an Rumba for the intermediate part. Then stop again on the Fermate and continue with the REFR. preset |
| 21 | Vija Lied SL2 | The operetta title from the "Merry Widow" by Franz Léhar, here in a "organ sounding" version, which is reminiscent of Ady Zehnpfennigs interpretation on the earlier Böhm-LP "Magic of Operetta" on the legendary Professional 2000 to remember. |
| 22 | Dein ist m.g. Herz SL2 | This operetta title á la Ady Zehnpfennig was also interpreted as a fast Samba. The typical intro or the rhythmic accompaniment chords with the piano can be played on the sub manual on the left. On the BRIDGE Preset you can let off steam a little and create a Impvise interlude with samba trumpets and guitar. |
| 23 | La Golondrina SL2 | A SONG for the famous Mexican folk song, the trumpet intro. please play on the lower right. |
| 24 | Snowbird Bert SL2 | Bert stands here for Bert Kaempfert, of course. A title in the typical Brass-Sound of the Kaempfert Band. Pay attention to the corresponding dynamic Accentuation through changing touch dynamics. |
| 25 | Highland Cathedral SL2 | Not a Scottish folk song, but composed in Germany: Highland Cathedral, true to style with bagpipe instrumentation |
| 26 | Guantanamera SL2 | INTRO with trumpets, then a dreamy guitar takes over on VERS 1 the melody VERS 2 is a pan flute. Increase then with REFR. Preset, incl. filling string from the SOLOCHORD. |
| 27 | For Your Eyes SL2 | The typical intro for the James Bond song "For Your Eyes Only" will be released on the sub-manual on the right. |

- | | | |
|----|--------------------------|---|
| 28 | Elvira Madigan SL2 | Composed by W.A. Mozart, made famous by the Swedish movie "Elvira Madigan" and then especially by the James Last version that was also the inspiration for our presets. |
| 29 | Speak softly Love SL2 | The theme music from the movie "The Godfather". |
| 30 | Ghostrider SL2 | The famous "riders in the sky" with a distinctive country guitar. Please, play Part B with the brass section on the Lower manual right. |
| 31 | Aurora SL2 | A synthesizer hit of the Dutch formation NOVA from the early 1980s. The VERS2 Preset is used to increase the sound with the SOLOCHORD function, to double the lead synth. |
| 32 | Self Control SL2 | 80's hit by Laura Brannigan and others. On the Lower manual left you can play the typical chord accents |
| 33 | Vaya Con Dios SL2 | There are a lot of versions of this tune, from Johnny Cash to Julio Iglesias. Please play the trumpets for the chorus in the Lower manual in a bit "epic" style |
| 34 | Goodbye ,m. love SL2 | An unforgettable hit by Demis Roussos |
| 35 | Butterfly SL2 | The world hit by Daniel Gerard. The drums begin with muted snare for the verse part. Starting from the VERS2 preset it will be switched on. |
| 36 | Sailing SL2 | Rod Stewards hit with a typical whistling organ sound for the intro on the Lower manual right |
| 37 | Cherpie Cheep SL2 | A tune of the band "Middle of the Road". Accentuate the choirs in the Lower manual right in chorus true to style by touch dynamic |
| 38 | Take On Me SL2 | The first and most successful 80s of the group "A-Ha". |
| 39 | Everything I do SL2 | Brian Adams scandal from the movie "Robin Hood" with Kevin Kostner |
| 40 | Save your Kisses SL2 | 1970s hit of the group "Brotherhood of Men" |
| 41 | Atemlos SL2 | Helene Fischer's super hit is not to be missed in Preset List 2 of course |
| 42 | Listen to your heart SL2 | Listen to you heart, a hit of the Swedish band "Roxette" |
| 43 | Ave Maria no morro SL2 | Ave Maria no Morro, the famous Rhumba with Flamenco Guitar |
| 44 | Elisabeth Serenade SL2 | The famous Elisabeth Serenade. |
| 45 | Portsmouth SL2 | Well known title by Mike Oldfield in folk style and with a lot of percussion. Therefore with semi-automatic function and timpani registered in the lower manual on the left. The Song can be played well without style accompaniment. |

- 46 Bird of Paradise SL2 James Last and Horea Crishan on the pan flute made this song world-famous. The pan flute in the upper manual is registered monophonically, so you can paint the strings underneath with a full grip.
- 47 April in Portugal SL2 An evergreen in the typical Walter Wanderly organ-Bossa style
- 48 Ring of Fire SL2 Johnny Cash made this country classic famous. The trumpets for the intro or the interludes are on Lower right.
- 49 Fürst Igor SL2 For this arrangement of the well-known melody "Prince Igor" from the Polovtsians Dances of Alexander Borodin we orientated ourselves once again at a Version of Ady Zehnpfennig, played on the LP "The most beautiful melodies from Russia" in 1978. Marimbas in the upper manual for the INTRO and also in the lower manual on the left for the rhythmic accompaniment, please play through very accentuated!
- 50 I w.to know w. love SL2 A SONG for the hit "I want to know what love is" by the band Foreigner.
- 51 Never fall in love ag. SL2 A classic in the BossaNova Sound by Burt Bacharach
- 52 Wonderful Land SL2 The guitar hit by the Shadows, with a typical Muted Guitar for the Interlude on the Lower manual right
- 53 Jerusalem (Alpert) SL2 Herb Alpert and also Daliah Lavi made this emotional number famous.
- 54 Miss Marple SL2 Who doesn't know the typical harpsichord melody of the famous theme of the Miss Marple movies? Here's the SONG for that!
- 55 Largo New World SL2 The famous oboe theme from Dvorak's Symphony from the new world.
- 56 Born Free SL2 The theme from the "Born Free" films, written by James Bond composer John Barry. Interesting registration on the lower manual on the right: bells for the intro with soft touch, strings with strong touch
- 57 Tage wie diese SL2 The World Cup party hit of the German band "Tote Hosen". Play the typical accompaniment figure in the verse on an echo guitar in Lower
- 58 Telstar 2015 SL2 The evergreen of the Spotnicks, here in a modern dance version with Lead synth in tune. Percussion Synth in VERS2 for B-part
- 59 Rio (Wunderlich) SL2 A composition by Klaus Wunderlich, which he performed in 1970 on his album "Around The World..." album. Here with the typical drawbar sound of the Hammond H-100 organ, created by the SEMPRA RealOrgan module.
- 60 Cavaquinho SL2 A "finger-breaker"? No, an organ parade number in Percussion drawbar sound!

- 61 Unchained Melody SL2 Ady Zehnpfennig has created this evergreen with dreamlike sine sound on the LP "Fantastic Organ Collection" released 1981. Thanks to the RealOrgan the unique drawbar Sound of the Professional 2000 organ used on this album is back here.
- 62 Banana Boat Poporgan SL2 A famous song by singer Harry Belafonte, here with a modern groove. Play the question and answer of the melody alternating with the organ sounds of the Upper and the wind section with swelling effect in the Lower right.
- 63 Song of Joy SL2 Beethoven's "Ode to Joy" in the famous pop version by Miguel Rios. INTRO with cello. VERS1 and 2 with slower style. Here the Trumpets in the upper manual not yet dynamically accentuated too much, but be played a little more restrained.
The REFR and ENDING presets use a faster style, as in the original arrangement. With the ENDING Preset the final will be played with timpanies on Lower left to set the orchestral accents.
- 64 Black Smoke Synt SL2 A synthesizer preset in a chill-out groove, with which e.g. the German contribution "Black Smoke" by Ann-Sophie to the ESC Eurovision Song Contest 2015 can be played.

Bank 113 - Sempra-Songs II BW:

- | | | |
|----|----------------------------|---|
| 01 | Secred Garden Chill SL2 | Smooth-Jazz-Songs, such as the title "The Sercret Garden" in the style of US genre musician Brian Culbertson |
| 02 | George Love Song SL2 | Love songs in the style of US guitarist George Benson or even Lee Ritenour, Peter White or Marc Antoine |
| 03 | Jarreau Ballad SL2 | Smooth-Jazz ballads from the 80s in piano style, e.g. by the US jazz singer Al Jarreau |
| 04 | Benson Guit. Night SL2 | SONG for the famous George Benson song "Give Me The Night". |
| 05 | Dr. Feelgood Eye SL2 | Perfect for Dr. Feelgood's disco hit "Sexy Eyes" |
| 06 | Chic's Forbidden SL2 | SONG for the disco hit "My Forbidden Lover" of the seventies Disoc-Band "Chic" - with lower bass function for the typical intro of the song |
| 07 | Chic's Le Freak SL2 | SONG for the hit "Le Freak", also by the band "Chic". |
| 08 | Shakatak Corner SL2 | For disco songs like "At the Corner", "Invitations" or "Night Birds" from the British pop, jazz and funk band "Shakatak" |
| 09 | Ady 's Help Beat SL2 | For the Tom Jones title "Help Myself", here in the Ady-Zenpfennig-organ sound |
| 10 | Ady Böhm Sinus SL2 | The typical sinus sound by Ady Zehnpfennig on the Dr. Böhm Organ Professional 2000 |
| 11 | Dimes Disco Feel SL2 | In this SONG you'll find as a special 6 arranged presets for the title "Marco Polo" by Ady Zehnpfennig (Andy Dimes) |
| 12 | Dimes Disco Party SL2 | SONG for pop-organ songs by Andy Dimes (Ady Zehnpfennig) |
| 1 | 3Take That Deep SL2 | For "How Deep Is Your Love" by the British boy group Take That |
| 14 | Clapton's World SL2Optimal | for Eric Clapton's world-famous song "Change The World" in Pop-piano style |
| 15 | Mancini River SL2 | A SONG for the world-famous title "Moon River" by Henry Mancini from the movie "Breakfast at Tiffany's" |
| 16 | Mancini Break SL2 | Alternative registrations for Mancini titles (but not only for them) |
| 17 | Mancini ChaCha SL2 | A third SONG for Mancini- and other tracks in Cha-Cha-Groove |
| 18 | Burt's Bossa SL2 | Perfect for Burt Bacharach compositions in the Bossanova groove |
| 19 | Burt's Slow Waltz SL2 | A SONG for the Bacharach composition "What The World Needs Now" |
| 20 | Burt's Easy Beat SL2 | SONG for Easy-Listening-Songs, e.g. by Burt Bacharach, in 8 Beat groove |

- | | | |
|----|-----------------------|---|
| 21 | Shearing Combo SL2 | The sound of the legendary George Shearing Quintet, with block chords from the Solochord function - ideal for jazz standard ballads |
| 22 | Art Van Damme Fox SL2 | The sound of the legendary jazz accordionist Art Van Damme with Block chords from the solo chord function |
| 23 | Mr. HammondCombo SL2 | A combo setting in the style of the legendary Klaus Wunderlich |
| 24 | Mr.WunderbarFox SL2 | Another SONG in Klaus Wunderlich organ sound by the RealOrgan |
| 25 | Wanderley Bossa SL2 | The typical Brazilian Walter Wanderley organ sound for Bossanova-songs |
| 26 | Wanderley Finale SL2 | Another variant of the Walter Wanderley organ sound |
| 27 | X66 Ham&Bossa SL | 2The sound of the legendary Hammond organ X66, as once used by the British organist George Blackmore for the Bossanova standard "Meditation". |
| 28 | 50' OrganBossa SL2 | The sound of the world-famous Hammond organist Ethel Smith - perfect for Bossanova songs |
| 29 | Jesse Open Flute SL2 | The typical "Open Flute" organ sound of the legendary US Theatre organist Jesse Crawford |
| 30 | Jesse HarmonicsL2 | The extended, typical "Open Harmonies" organ sound by Jesse Crawford in conjunction with the Solochord function |
| 31 | Lowrey Jazz Combo SL2 | A soft jazz organ combo in the sound of the well-known American home organ brand, e.g. for the jazz standard "Stompin' At The Savoy". |
| 32 | Lowrey Organ Jazz SL2 | Two more jazz organ combinations in soft Lowrey sound |
| 33 | Glenn Conn-Organ SL2 | The full tibia sound, like the young US organist Glenn Derringer once played it on his of a Conn organ in the 50's/60's - optimal for slow Standards and Evergreens |
| 34 | Glenn Full Tibia SL2 | Further variations of the Glenn Derringer sound |
| 35 | Bob's Organ Time SL2 | The American organ sound of US organist Bob Ralston from the early Sixties, e.g. optimal for evergreens and standards such as "Moonglow or George Geshwin's Summertime. |
| 36 | Bob Twiligh Time SL2 | The sound of the American studio string orchestra "The Living Strings", under the leadership of Johnny Douglas, and in conjunction with the Hammond Organ sound by US organist Bob Ralston - ideal for rehearsing the 1966 arrangements of the tune "Twilight Time" |
| 37 | Leroy Typewrite SL2 | Perfect preset for the Leroy Anderson composition "The Typewriter" with corresponding effects of the typewriter-tips noises. |

- | | | |
|----|------------------------|---|
| 38 | Leroy Whistler SL2 | Registrations for the Leroy Anderson composition "The Whistler and his Dog" with corresponding whistle effects |
| 39 | Anderson BlueTangoSL2 | A SONG for the well-known Leroy-Anderson-Tango composition "Blue Tango. |
| 40 | Anderson Finale SL2 | The Leroy Anderson Waltz composition "Belle Of The Ball" with full brass parts in the intro were the inspiration for this SONG |
| 41 | Happy Strings SL2 | Broadway strings for well-known Broadway or musical melodies |
| 42 | Jobim 's Bossa SL2 | Settings for Brazilian Bossanova titles in the typical sound of the world-famous Bossanova composer Antonio-Carlos Jobim, with piano and flutes. |
| 43 | Jobim 's String SL2 | Another variation for titles by Antonio-Carlos Jobim, in sound by Claus-Ogerman with Strings, Piano and Flutes |
| 44 | REAL BossaOrgan SL2 | Organ sound variations of the famous Brazilian Bossanova-organists Walter Wanderley with RealOrgan Drawbars |
| 45 | W. Wanderley Bossa SL2 | Further organ sound variation with RealOrgan drawbars. |
| 46 | Samba doBrasil SL2 | Modern Brazilian samba for famous evergreens like "Brazil", "Tristeza" etc. |
| 47 | Rio Disco Samba SL2 | Disco Samba Presets for Brazilian songs in the style of "Two-Man-Sound", for example their famous Disco Samba Medley |
| 48 | Tom's Organ Solo SL2 | SONG for the intro of the Santana version of "Oye como va". with the legendary organ intro and organ solo of Santana-Keyboarder/Organist Tom Coster |
| 49 | Santana Europe SL2 | SONG for Santana's world hit "Europe" with the typical sound the Carlos Santana guitar |
| 50 | Shade Of Pale Org. SL2 | "A Whiter Shade Of Pale", a world hit of the group Procol Harum with typical organ sound. The descending bass figure should be played in its proper style via control the activated organist mode on the pedal! |
| 51 | Concert For One SL2 | A typical orchestral setting with baroque recorder, for example for the title 'Concerto For One Voice' (Concerto pour une voix), or for melancholic, sentimental French film music. |
| 52 | Concerto Baroque SL2 | Baroque orchestra in pop groove in the style of "Rondo Veneziano" |
| 53 | Percy Summer Place SL2 | A SONG for the well-known melody from the movie "A Summe Place" by Percy Faith |

- | | | |
|----|-------------------------|---|
| 54 | Magnificent SevenL2 | SONG for the famous Western movie theme "The Magnificent Seven") |
| 55 | Bath, Good, Ugly SL2 | SONG for the melody from the western movie "The Good, the Bad and the Ugly" by Ennio Morricone |
| 56 | Miller Moonlight SL2 | The typical Glenn-Miller-BigBand sound for the well-known title "Moonlight Serenade" with solo chord function and leading clarinet |
| 57 | 40' US BigBand L2 | The sound of an American BigBand of the 40's - optimal for Swing-Music of the 40s |
| 58 | George F's Organ SL2 | Jazz organ sound of the Swiss E.-organist Georges Fleury |
| 59 | Gypsy-JazzBand SL2 | Zigeuner-Jazz in the style of Djano Reinhardt or also suitable for Entertainment and jazz music in the style of the German violonist Helmut Zacharias |
| 60 | Roarn ' 20ties SL2 | The Charleston style of the wild twenties. |
| 61 | Tower Ballroom SL2 | The sound of the Wurlitzer theatre organ from the Blackpool Tower with Phantom piano and third coupler |
| 62 | Cinema Organ SL2 | Sounds of a typical cinema organ |
| 63 | Milk&Hon. Halleluja SL2 | A SONG for the famous Song Contest Winner title from the late 1970s |
| 64 | Radetzky March SL2 | A SONG for the famous "Radetzky March" by Johann Strauss sen. but of course also suitable for further marching compositions. |



Keyswerk Music Electronics GmbH

Warbersche Str. 32

31675 Bückeburg Castle

Phone (+49) 05722/90 50 88

Fax: (+49) 05722/287 555

E-mail: info@boehm-orgeln.de

Web: www.boehm-orgeln.de